



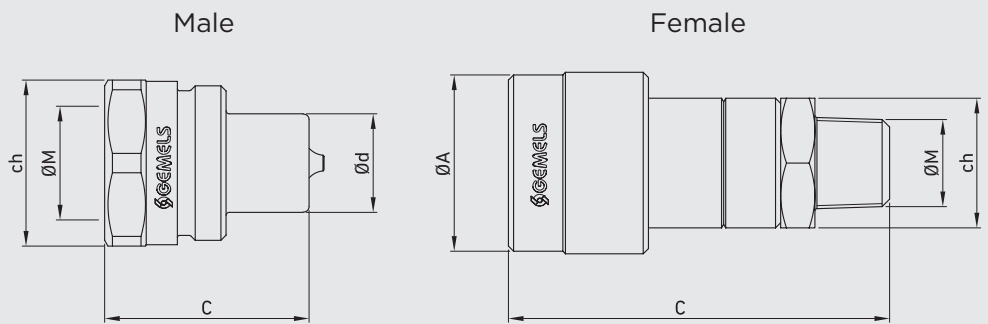
VGB

ISO 14540 - WITH POPPET/BALL

Edition. 21.4

CS Carbon Steel

- Type: Quick Couplings
- Models: ISO 14540
- Sizes: from DN6 up to DN10
- Pressure: up to PN700
- Treatment: Galvanized



Available also
in patented version:
ball valve with integrated
quick coupling.



CODE DESCRIPTION STRUCTURE

QC	N1/4	1M/F	DN12,5	1	B
-----------	-------------	-------------	---------------	----------	----------

Type of coupling

VGB

Ends

ASME B1.20.1 NPT FEMALE ASME B1.20.1 NPT MALE

N 1/4 N 1/4 M
N 3/8 N 3/8 M

MALE
FEMALE

DN/ISO

6,3
10

Body Material

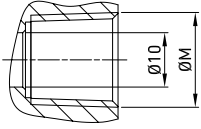
● 1 = 1,0737

Seal material

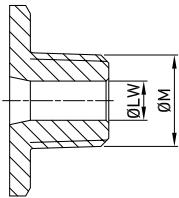
● B = NBR E = FKM*

*On request

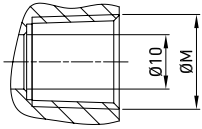
- Cups
- Plugs
with ball instead of poppet


**QUICK COUPLINGS ISO 14540 VGB (MALE/FEMALE)
FEMALE THREAD ASME B1.20.1 NPT WITH POPPET**

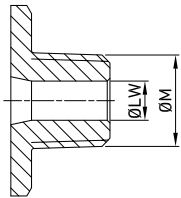
TYPE	DN	PN	$\varnothing A$	C	$\varnothing d$	ch	$\varnothing M$	WEIGHT	ITEM CODE
QC VGB N 1/4 POPPET MALE	6,3	MPa 70	mm -	32,5	15,8	19	NPT 1/4	kg 0,072	NC17N010000
		Psi 10150	inch -	1,28	0,62			lb 0,16	
QC VGB N 1/4 POPPET FEMALE	6,3	MPa 70	mm 28	58,1	-	19	NPT 1/4	kg 0,137	NC18N010000
		Psi 10150	inch 1,10	2,29	-			lb 0,30	
QC VGB N 3/8 POPPET MALE	10	MPa 70	mm -	35	19	32	NPT 3/8	kg 0,111	NC17N020000
		Psi 10150	inch -	1,38	0,75			lb 0,24	
QC VGB N 3/8 POPPET FEMALE	10	MPa 70	mm 34	68,5	-	27	NPT 3/8	kg 0,287	NC18N020000
		Psi 10150	inch 1,34	2,70	-			lb 0,63	


**QUICK COUPLINGS ISO 14540 VGB (MALE/FEMALE)
MALE THREAD ASME B1.20.1 NPT WITH POPPET**

TYPE	DN	PN	$\varnothing A$	C	$\varnothing d$	ch	$\varnothing M$	WEIGHT	ITEM CODE
QC VGB N 1/4M POPPET MALE	6,3	MPa 70	mm -	42,9	15,9	19	NPT 1/4	kg 0,104	NC17U010000
		Psi 10150	inch -	1,69	0,63			lb 0,23	
QC VGB N 1/4M POPPET FEMALE	6,3	MPa 70	mm 28,5	60,8	-	22	NPT 1/4	kg 0,113	NC18U010000
		Psi 10150	inch 1,12	2,39	-			lb 0,25	
QC VGB N 3/8M POPPET MALE	10	MPa 70	mm -	46,3	19	25	NPT 3/8	kg 0,14	NC17U020000
		Psi 10150	inch -	1,82	0,75			lb 0,31	
QC VGB N 3/8M POPPET FEMALE	10	MPa 70	mm 35	73,5	-	25	NPT 3/8	kg 0,222	NC18U020000
		Psi 10150	inch 1,38	2,89	-			lb 0,49	


**QUICK COUPLINGS ISO 14540 VGB (MALE/FEMALE)
FEMALE THREAD ASME B1.20.1 NPT WITH BALL**

TYPE	DN	PN	ØA	C	Ød	ch	ØM	WEIGHT	ITEM CODE
QC VGB N 1/4 BALL MALE	6,3	MPa 70	mm -	32,5	15,8	19	NPT 1/4	kg 0,072	NC17N010001
		Psi 10150	inch -	1,28	0,62			lb 0,16	
QC VGB N 1/4 BALL FEMALE	6,3	MPa 70	mm 28	58,1	-	19	NPT 1/4	kg 0,137	NC18N010002
		Psi 10150	inch 1,10	2,29	-			lb 0,30	
QC VGB N 3/8 BALL MALE	10	MPa 70	mm -	35	19	32	NPT 3/8	kg 0,111	NC17N020001
		Psi 10150	inch -	1,38	0,75			lb 0,24	
QC VGB N 3/8 BALL FEMALE	10	MPa 70	mm 34	68,5	-	27	NPT 3/8	kg 0,287	NC18N020002
		Psi 10150	inch 1,34	2,70	-			lb 0,63	


**QUICK COUPLINGS ISO 14540 VGB (MALE/FEMALE)
MALE THREAD ASME B1.20.1 NPT WITH BALL**

TYPE	DN	PN	ØA	C	Ød	ch	ØM	WEIGHT	ITEM CODE
QC VGB N 1/4M BALL MALE	6,3	MPa 70	mm -	42,9	15,9	19	NPT 1/4	kg 0,104	NC17U010001
		Psi 10150	inch -	1,69	0,63			lb 0,23	
QC VGB N 1/4M BALL FEMALE	6,3	MPa 70	mm 28,5	60,8	-	22	NPT 1/4	kg 0,113	NC18N010001
		Psi 10150	inch 1,12	2,39	-			lb 0,25	
QC VGB N 3/8M BALL MALE	10	MPa 70	mm -	46,3	19	25	NPT 3/8	kg 0,14	NC17U020001
		Psi 10150	inch -	1,82	0,75			lb 0,31	
QC VGB N 3/8M BALL FEMALE	10	MPa 70	mm 35	73,5	-	25	NPT 3/8	kg 0,222	NC18N020001
		Psi 10150	inch 1,38	2,89	-			lb 0,49	