



PUSH-PULL

ISO 7241/A - WITH POPPET PUSH PULL

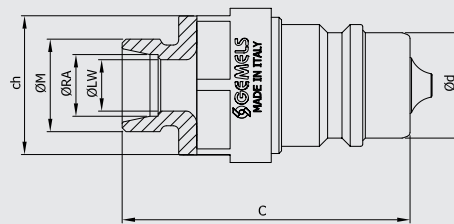
Available other different threads on request

Edition. 21.4

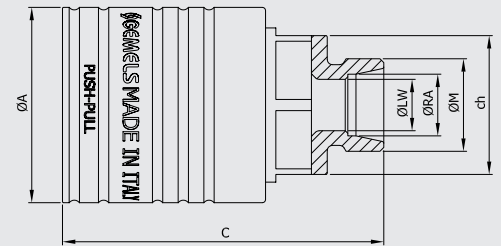
CS Carbon Steel

- Type: Quick Couplings
- Models: ISO 7241/A
PUSH-PULL
- Sizes: from DN10 up to DN25
- Pressure: up to PN420
- Treatment: Galvanized

Male



Female



Available also
in patented version:
ball valve with integrated
quick coupling.



CODE DESCRIPTION STRUCTURE

		QC	1/2	F/M	DN12,5	1	B																																																												
Type of coupling		ISO 7241A PP																																																																	
Ends		<table border="1"> <thead> <tr> <th>ISO 1179-1</th> <th>ASME B1.20.1</th> <th>ISO 8434-1-S</th> <th>ISO 8434-1-L</th> <th>ISO 8434-1-S</th> <th>ISO 8434-1-L</th> </tr> <tr> <th>BSPP</th> <th>NPT</th> <th>(DIN 2353)</th> <th>(DIN 2353)</th> <th>(DIN 2353)</th> <th>(DIN 2353)</th> </tr> </thead> <tbody> <tr> <td>G3/8</td> <td></td> <td>12S</td> <td>6L</td> <td>10S</td> <td>8L</td> </tr> <tr> <td>G1/2</td> <td>N 1/2</td> <td>16S</td> <td>8L</td> <td>12S</td> <td>10L</td> </tr> <tr> <td>G3/4</td> <td></td> <td></td> <td>10L</td> <td>16S</td> <td>12L</td> </tr> <tr> <td>G1</td> <td></td> <td></td> <td>12L</td> <td>20S</td> <td>15L</td> </tr> <tr> <td></td> <td></td> <td></td> <td>15L</td> <td></td> <td>18L</td> </tr> <tr> <td></td> <td></td> <td></td> <td>18L</td> <td></td> <td>22L</td> </tr> <tr> <td></td> <td></td> <td></td> <td>22L</td> <td></td> <td>28L</td> </tr> <tr> <td></td> <td></td> <td></td> <td>28L</td> <td></td> <td></td> </tr> </tbody> </table>						ISO 1179-1	ASME B1.20.1	ISO 8434-1-S	ISO 8434-1-L	ISO 8434-1-S	ISO 8434-1-L	BSPP	NPT	(DIN 2353)	(DIN 2353)	(DIN 2353)	(DIN 2353)	G3/8		12S	6L	10S	8L	G1/2	N 1/2	16S	8L	12S	10L	G3/4			10L	16S	12L	G1			12L	20S	15L				15L		18L				18L		22L				22L		28L				28L		
ISO 1179-1	ASME B1.20.1	ISO 8434-1-S	ISO 8434-1-L	ISO 8434-1-S	ISO 8434-1-L																																																														
BSPP	NPT	(DIN 2353)	(DIN 2353)	(DIN 2353)	(DIN 2353)																																																														
G3/8		12S	6L	10S	8L																																																														
G1/2	N 1/2	16S	8L	12S	10L																																																														
G3/4			10L	16S	12L																																																														
G1			12L	20S	15L																																																														
			15L		18L																																																														
			18L		22L																																																														
			22L		28L																																																														
			28L																																																																
MALE																																																																			
FEMALE																																																																			
DN/ISO		10 12,5 20 25																																																																	
Body Material		● 1 = 1,0737																																																																	
Seal material		B = NBR E = FKM*																																																																	

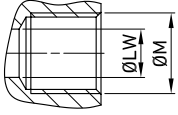
*On request

- Plugs
- Cups



Available colours:

- Blue
- Yellow
- Red
- Green

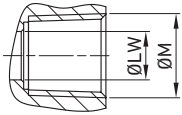


Male type see ISO 7241/A

QUICK COUPLINGS PUSH-PULL (male / female) FEMALE THREAD ISO 1179-1 BSPP Interchangeable according to ISO 7241-A

CS
Carbon
Steel

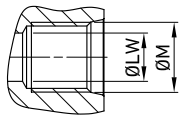
TYPE	DN	PN	ØA	C	Ød	ch	ØM	WEIGHT	ITEM CODE
QC PP G 3/8 FEMALE	10	MPa 42	mm 32	60,5	-	24	G3/8	kg 0,26	NC12G020000
		Psi 6090	inch 1,26	2,38	-	0,94		lb 0,57	
QC PP G 1/2 FEMALE	10	MPa 42	mm 32	63	-	24	G1/2	kg 0,28	NC12G020001
		Psi 6090	inch 1,26	2,48	-	0,94		lb 0,62	
QC PP G 3/8 FEMALE	12,5	MPa 35	mm 38	66	-	27	G3/8	kg 0,29	NC12G030000
		Psi 5075	inch 1,50	2,60	-	1,06		lb 0,64	
QC PP G 1/2 FEMALE	12,5	MPa 35	mm 38	68,5	-	27	G1/2	kg 0,31	NC12G030001
		Psi 5075	inch 1,50	2,70	-	1,06		lb 0,68	
QC PP G 3/4 FEMALE	19	MPa 25	mm 47	85,6	-	37	G3/4	kg 0,59	NC12G040000
		Psi 3625	inch 1,85	3,37	-	1,46		lb 1,30	
QC PP G 3/4 FEMALE	25	MPa 25	mm 55	102	-	41	G3/4	kg 0,94	NC12G050000
		Psi 3625	inch 2,17	4,02	-	1,61		lb 2,07	
QC PP G 1 FEMALE	25	MPa 25	mm 55	104	-	41	G1	kg 0,92	NC12G050001
		Psi 3625	inch 2,17	4,09	-	1,61		lb 2,03	



Male type see ISO 7241/A

QUICK COUPLINGS PUSH-PULL (male / female)
FEMALE THREAD ASME B1.20.1 NPT
 Interchangeable according to ISO 7241-A

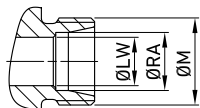
TYPE	DN	PN		ØA		C	Ød	ch	ØM	WEIGHT		CS Carbon Steel
		MPa		mm						kg	lb	ITEM CODE
QC PP N 1/2 FEMALE	12,5	35		38		72	-	27	N1/2	0,19		NC12N030001
		5075		1,50		2,83	-	1,06		0,42		



Male type see ISO 7241/A

QUICK COUPLINGS PUSH-PULL (male / female)
FEMALE THREAD ISO 11926-1 (SAE J1926-1) ORB
 Interchangeable according to ISO 7241-A

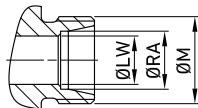
TYPE	DN	PN		ØA		C	Ød	ch	ØM	WEIGHT		CS Carbon Steel
		MPa		mm						kg	lb	ITEM CODE
QC PP SAE8 FEMALE	12,5	35		38		68,5	-	27	SAE8	0,298		NC12S030001
		5075		1,50		2,70	-	1,06		0,66		



QUICK COUPLINGS PUSH-PULL (male / female) MALE THREAD METRIC ISO 8434-1-S (DIN 2353) Interchangeable according to ISO 7241-A

CS
Carbon
Steel

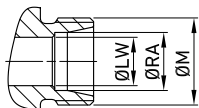
TYPE	DN	PN	ØA	C	Ød	ch	ØM	ØLW	ØRA	WEIGHT	ITEM CODE	
QC PP 8S MALE	10	MPa 42	mm -	52	17,3	24	M16X1,5	5	8	kg 0,12	NC11H020000	
		Psi 6090	inch -	2,05	0,68	0,94		0,20	0,31	lb 0,26		
QC PP 8S FEMALE		MPa 42	mm 32	63	-	24	M16X1,5	5	8	kg 0,321	NC12H020000	
		Psi 6090	inch 1,26	2,48	-	0,94		0,20	0,31	lb 0,71		
QC PP 10S MALE		MPa 42	mm -	52	17,3	24	M18X1,5	10	7	kg 0,13	NC11H020001	
		Psi 6090	inch -	2,05	0,68	0,94		0,39	0,28	lb 0,29		
QC PP 10S FEMALE		MPa 42	mm 32	63	-	24	M18X1,5	10	7	kg 0,324	NC12H020001	
		Psi 6090	inch 1,26	2,48	-	0,94		0,39	0,28	lb 0,71		
QC PP 12S MALE		12,5	MPa 35	mm -	57	20,5	27	M20X1,5	8	12	kg 0,135	NC11H030000
			Psi 5075	inch -	2,24	0,81	1,06		0,31	0,47	lb 0,30	
QC PP 12S FEMALE			MPa 35	mm 38	64,5	-	27	M20X1,5	8	12	kg 0,28	NC12H030000
			Psi 5075	inch 1,50	2,54	-	1,06		0,31	0,47	lb 0,62	
QC PP 14S MALE	MPa 35		mm -	59	20,5	27	M22X1,5	8	14	kg 0,45	NC11H030001	
	Psi 5075		inch -	2,32	0,81	1,06		0,31	0,55	lb 0,99		
QC PP 14S FEMALE	MPa 35		mm 38	66,5	-	27	M22X1,5	8	14	kg 0,281	NC12H030001	
	Psi 5075		inch 1,50	2,62	-	1,06		0,31	0,55	lb 0,62		
QC PP 16S MALE	MPa 35		mm -	59	20,5	27	M24X1,5	12	16	kg 0,157	NC11H030002	
	Psi 5075		inch -	2,32	0,81	1,06		0,47	0,63	lb 0,35		
QC PP 16S FEMALE	MPa 35		mm 38	66,5	-	27	M24X1,5	12	16	kg 0,284	NC12H030002	
	Psi 5075		inch 1,50	2,62	-	1,06		0,47	0,63	lb 0,63		
QC PP 16S MALE	20	MPa 25	mm -	64	29	34	M24X1,5	12	16	kg 0,251	NC11H040000	
		Psi 3625	inch -	2,52	1,14	1,34		0,47	0,63	lb 0,55		
QC PP 16S FEMALE		MPa 25	mm 47	79,5	-	34	M24X1,5	12	16	kg 0,51	NC12H040000	
		Psi 3625	inch 1,85	3,13	-	1,34		0,47	0,63	lb 1,12		
QC PP 20S MALE		MPa 25	mm -	66	29	34	M30X2	16	20	kg 0,26	NC11H040001	
		Psi 3625	inch -	2,60	1,14	1,34		0,63	0,79	lb 0,57		
QC PP 20S FEMALE		MPa 25	mm 47	81,5	-	34	M30X2	16	20	kg 0,53	NC12H040001	
		Psi 3625	inch 1,85	3,21	-	1,34		0,63	0,79	lb 1,17		
QC PP 20S MALE		25	MPa 25	mm -	88,5	34,34	41	M30X2	12	16	kg 0,4	NC11H050000
			Psi 3625	inch -	3,48	1,35	1,61		0,47	0,63	lb 0,88	
QC PP 20S FEMALE			MPa 25	mm 55	104	-	41	M30X2	12	16	kg 0,11	NC12H050000
			Psi 3625	inch 2,17	4,09	-	1,61		0,47	0,63	lb 0,24	
QC PP 25S MALE	MPa 25		mm -	90,5	34,34	41	M36X2	16	20	kg 0,56	NC11H050001	
	Psi 3625		inch -	3,56	1,35	1,61		0,63	0,79	lb 1,23		
QC PP 25S FEMALE	MPa 25		mm 55	106	-	41	M36X2	16	20	kg 0,123	NC12H050001	
	Psi 3625		inch 2,17	4,17	-	1,61		0,63	0,79	lb 0,27		
QC PP 30S MALE	MPa 25		mm -	92,5	34,34	46	M42X2	12	16	kg 0,6	NC11H050002	
	Psi 3625		inch -	3,64	1,35	1,81		0,47	0,63	lb 1,32		
QC PP 30S FEMALE	MPa 25		mm 55	108	-	46	M42X2	12	16	kg 0,25	NC12H050002	
	Psi 3625		inch 2,17	4,25	-	1,81		0,47	0,63	lb 0,55		



QUICK COUPLINGS PUSH-PULL (male / female)
MALE THREAD METRIC ISO 8434-1-L (DIN 2353)
 Interchangeable according to ISO 7241-A

CS
Carbon
Steel

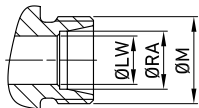
TYPE	DN	PN	ØA	C	Ød	ch	ØM	ØLW	ØRA	WEIGHT	ITEM CODE	
QC PP 6L MALE	10	MPa 42	mm -	50	17,3	24	M12X1,5	4	6	kg	0,07	NC11L020002
		Psi 6090	inch -	1,97	0,68	0,94				lb	0,15	
QC PP 6L FEMALE		MPa 42	mm 32	61	-	24	M12X1,5	4	6	kg	0,25	NC12L020002
		Psi 6090	inch 1,26	2,40	-	0,94				lb	0,55	
QC PP 8L MALE		MPa 42	mm -	50	17,3	24	M14X1,5	6	8	kg	0,13	NC11L020000
		Psi 6090	inch -	1,97	0,68	0,94				lb	0,29	
QC PP 8L FEMALE		MPa 42	mm 32	61	-	24	M14X1,5	6	8	kg	0,253	NC12L020000
		Psi 6090	inch 1,26	2,40	-	0,94				lb	0,56	
QC PP 10L MALE		MPa 42	mm -	51	17,3	24	M16X1,5	8	10	kg	0,15	NC11L020001
		Psi 6090	inch -	2,01	0,68	0,94				lb	0,33	
QC PP 10L FEMALE		MPa 42	mm 32	62	-	24	M16X1,5	8	10	kg	0,255	NC12L020001
		Psi 6090	inch 1,26	2,44	-	0,94				lb	0,56	
QC PP 10L MALE	MPa 35	mm -	56	20,5	27	M16X1,5	8	10	kg	0,16	NC11L030000	
	Psi 5075	inch -	2,20	0,81	1,06				lb	0,35		
QC PP 10L FEMALE	MPa 35	mm 38	63,5	-	27	M16X1,5	8	10	kg	0,24	NC12L030000	
	Psi 5075	inch 1,50	2,50	-	1,06				lb	0,53		
QC PP 12L MALE	MPa 35	mm -	56	20,5	27	M18X1,5	10	12	kg	0,169	NC11L030001	
	Psi 5075	inch -	2,20	0,81	1,06				lb	0,37		
QC PP 12L FEMALE	MPa 35	mm 38	63,5	-	27	M18X1,5	10	12	kg	0,254	NC12L030001	
	Psi 5075	inch 1,50	2,50	-	1,06				lb	0,56		
QC PP 15L MALE	MPa 35	mm -	57	20,5	27	M22X1,5	12	15	kg	0,17	NC11L030002	
	Psi 5075	inch -	2,24	0,81	1,06				lb	0,37		
QC PP 15L FEMALE	MPa 35	mm 38	64,5	-	27	M22X1,5	12	15	kg	0,26	NC12L030002	
	Psi 5075	inch 1,50	2,54	-	1,06				lb	0,57		
QC PP 18L MALE	MPa 35	mm -	57	20,5	27	M26X1,5	15	18	kg	0,179	NC11L030003	
	Psi 5075	inch -	2,24	0,81	1,06				lb	0,39		
QC PP 18L FEMALE	MPa 35	mm 38	64,5	-	27	M26X1,5	15	18	kg	0,263	NC12L030003	
	Psi 5075	inch 1,50	2,54	-	1,06				lb	0,58		
QC PP 18L MALE	MPa 25	mm -	62	29,1	34	M26X1,5	15	18	kg	0,25	NC11L040000	
	Psi 3625	inch -	2,44	1,15	1,34				lb	0,55		
QC PP 18L FEMALE	MPa 25	mm 47	77,5	-	34	M26X1,5	15	18	kg	0,52	NC12L040000	
	Psi 3625	inch 1,85	3,05	-	1,34				lb	1,15		
QC PP 22L MALE	MPa 25	mm -	64	29,1	34	M30X2	19	22	kg	0,27	NC11L040001	
	Psi 3625	inch -	2,52	1,15	1,34				lb	0,60		
QC PP 22L FEMALE	MPa 25	mm 47	79,5	-	34	M30X2	19	22	kg	0,55	NC12L040001	
	Psi 3625	inch 1,85	3,13	-	1,34				lb	1,21		
QC PP 22L MALE	MPa 25	mm -	86,5	34,34	41	M30X2	19	22	kg	0,4	NC11L050000	
	Psi 3625	inch -	3,41	1,35	1,61				lb	0,88		
QC PP 22L FEMALE	MPa 25	mm 55	102	-	41	M30X2	19	22	kg	0,89	NC12L050000	
	Psi 3625	inch 2,17	4,02	-	1,61				lb	1,96		
QC PP 28L MALE	MPa 25	mm -	86,5	34,34	41	M36X2	24	28	kg	0,45	NC11L050001	
	Psi 3625	inch -	3,41	1,35	1,61				lb	0,99		
QC PP 28L FEMALE	MPa 25	mm 55	102	-	41	M36X2	24	28	kg	0,895	NC12L050001	
	Psi 3625	inch 2,17	4,02	-	1,61				lb	1,97		
QC PP 35L MALE	MPa 25	mm -	88,5	34,34	46	M45X2	30	35	kg	0,5	NC11L050002	
	Psi 3625	inch -	3,48	1,35	1,81				lb	1,10		
QC PP 35L FEMALE	MPa 25	mm 55	104	-	46	M45X2	30	35	kg	0,9	NC12L050002	
	Psi 3625	inch 2,17	4,09	-	1,81				lb	1,98		



QUICK COUPLINGS PUSH-PULL (male / female) MALE THREAD METRIC ISO 8434-1-S (DIN 2353) BULKHEAD Interchangeable according to ISO 7241-A

CS
Carbon
Steel

TYPE	DN	PN	ØA	C	Ød	ch	ØM	ØLW	ØRA	WEIGHT	ITEM CODE	
QC PP 10S BK MALE	12,5	MPa 35	mm -	72	20,5	27	M18X1,5	7	10	kg 0,169	NC11030000	
		Psi 5075	inch -	2,83	0,81	1,06		0,28	0,39	lb 0,37		
QC PP 10S BK FEMALE		MPa 35	mm 38	79,5	-	27	M18X1,5	7	10	kg 0,3	NC121030000	
		Psi 5075	inch 1,50	3,13	-	1,06		0,28	0,39	lb 0,66		
QC PP 12S BK MALE		MPa 35	mm -	72	20,5	27	M20X1,5	8	12	kg 0,16	NC11030001	
		Psi 5075	inch -	2,83	0,81	1,06		0,31	0,47	lb 0,35		
QC PP 12S BK FEMALE		MPa 35	mm 38	79,5	-	27	M20X1,5	8	12	kg 0,32	NC121030001	
		Psi 5075	inch 1,50	3,13	-	1,06		0,31	0,47	lb 0,71		
QC PP 16S BK MALE		MPa 35	mm -	74	20,5	27	M24X1,5	12	16	kg 0,172	NC11030002	
		Psi 5075	inch -	2,91	0,81	1,06		0,47	0,63	lb 0,38		
QC PP 16S BK FEMALE		MPa 35	mm 38	81,5	-	27	M24X1,5	12	16	kg 0,33	NC121030002	
		Psi 5075	inch 1,50	3,21	-	1,06		0,47	0,63	lb 0,73		
QC PP 16S BK MALE	20	MPa 25	mm -	79	29,1	34	M24X1,5	12	16	kg 0,27	NC11040000	
		Psi 3625	inch -	3,11	1,15	1,34		0,47	0,63	lb 0,60		
QC PP 16S BK FEMALE		MPa 25	mm 47	94,5	-	34	M24X1,5	12	16	kg 0,57	NC121040000	
		Psi 3625	inch 1,85	3,72	-	1,34		0,47	0,63	lb 1,26		
QC PP 20S BK MALE		MPa 25	mm -	77	29,1	34	M30X2	16	20	kg 0,29	NC11040001	
		Psi 3625	inch -	3,03	1,15	1,34		0,63	0,79	lb 0,64		
QC PP 20S BK FEMALE		MPa 25	mm 47	92,5	-	34	M30X2	16	20	kg 0,6	NC121040001	
		Psi 3625	inch 1,85	3,64	-	1,34		0,63	0,79	lb 1,32		
QC PP 20S BK MALE		25	MPa 25	mm -	110,5	34,34	41	M30X2	16	20	kg 0,52	NC11050000
			Psi 3625	inch -	4,35	1,35	1,61		0,63	0,79	lb 1,15	
QC PP 20S BK FEMALE			MPa 25	mm 55	126	-	41	M30X2	16	20	kg 1,023	NC121050000
			Psi 3625	inch 2,17	4,96	-	1,61		0,63	0,79	lb 2,26	
QC PP 25S BK MALE	MPa 25		mm -	110,5	34,34	41	M36X2	20	25	kg 0,55	NC11050001	
	Psi 3625		inch -	4,35	1,35	1,61		0,79	0,98	lb 1,21		
QC PP 25S BK FEMALE	MPa 25		mm 55	126	-	41	M36X2	20	25	kg 1,12	NC121050001	
	Psi 3625		inch 2,17	4,96	-	1,61		0,79	0,98	lb 2,47		
QC PP 30S BK MALE	MPa 25		mm -	112,5	34,34	41	M42X2	25	30	kg 0,62	NC11050002	
	Psi 3625		inch -	4,43	1,35	1,61		0,98	1,18	lb 1,37		
QC PP 30S BK FEMALE	MPa 25		mm 55	128	-	41	M42X2	25	30	kg 1,22	NC121050002	
	Psi 3625		inch 2,17	5,04	-	1,61		0,98	1,18	lb 2,69		



QUICK COUPLINGS PUSH-PULL (male / female)
MALE THREAD METRIC ISO 8434-1-L (DIN 2353) BULKHEAD
 Interchangeable according to ISO 7241-A

CS
Carbon
Steel

TYPE	DN	PN	ØA	C	Ød	ch	ØM	ØLW	ØRA	WEIGHT	ITEM CODE
QC PP 8L BK MALE	10	MPa 42	mm -	65	17,3	24	M14X1,5	6	8	kg 0,12	NC11M020000
		Psi 6090	inch -	2,56	0,68	0,94		0,24	0,31	lb 0,26	
QC PP 8L BK FEMALE		MPa 42	mm 32	76	-	24	M14X1,5	6	8	kg 0,321	NC12M020000
			Psi 6090	inch 1,26	2,99	-		0,94	0,24	0,31	
QC PP 10L BK MALE		MPa 42	mm -	66	17,3	24	M16X1,5	8	10	kg 0,145	NC11M020001
			Psi 6090	inch -	2,60	0,68		0,94	0,31	0,39	
QC PP 10L BK FEMALE		MPa 42	mm 32	77	-	24	M16X1,5	8	10	kg 0,33	NC12M020001
			Psi 6090	inch 1,26	3,03	-		0,94	0,31	0,39	
QC PP 10L BK MALE		MPa 35	mm -	71	20,5	27	M16X1,5	8	10	kg 0,149	NC11M030000
			Psi 5075	inch -	2,80	0,81		1,06	0,31	0,39	
QC PP 10L BK FEMALE		MPa 35	mm 38	78,5	-	27	M16X1,5	8	10	kg 0,3	NC12M030000
			Psi 5075	inch 1,50	3,09	-		1,06	0,31	0,39	
QC PP 12L BK MALE	MPa 35	mm -	72	20,5	27	M18X1,5	10	12	kg 0,15	NC11M030001	
		Psi 5075	inch -	2,83	0,81		1,06	0,39	0,47		lb 0,33
QC PP 12L BK FEMALE	MPa 35	mm 38	79,5	-	27	M18X1,5	10	12	kg 0,3	NC12M030001	
		Psi 5075	inch 1,50	3,13	-		1,06	0,39	0,47		lb 0,66
QC PP 15L BK MALE	MPa 35	mm -	72	20,5	27	M22X1,5	12	15	kg 0,16	NC11M030002	
		Psi 5075	inch -	2,83	0,81		1,06	0,47	0,59		lb 0,35
QC PP 15L BK FEMALE	MPa 35	mm 38	79,5	-	27	M22X1,5	12	15	kg 0,31	NC12M030002	
		Psi 5075	inch 1,50	3,13	-		1,06	0,47	0,59		lb 0,68
QC PP 18L BK MALE	MPa 35	mm -	72	20,5	27	M26X1,5	15	18	kg 0,175	NC11M030003	
		Psi 5075	inch -	2,83	0,81		1,06	0,59	0,71		lb 0,39
QC PP 18L BK FEMALE	MPa 35	mm 38	79,5	-	27	M26X1,5	15	18	kg 0,33	NC12M030003	
		Psi 5075	inch 1,50	3,13	-		1,06	0,59	0,71		lb 0,73
QC PP 15L BK MALE	MPa 25	mm -	77	29,1	34	M22X1,5	12	15	kg 0,252	NC11M040000	
		Psi 3625	inch -	3,03	1,15		1,34	0,47	0,59		lb 0,56
QC PP 15L BK FEMALE	MPa 25	mm 47	92,5	-	34	M22X1,5	12	15	kg 0,55	NC12M040000	
		Psi 3625	inch 1,85	3,64	-		1,34	0,47	0,59		lb 1,21
QC PP 18L BK MALE	MPa 25	mm -	77	29,1	34	M26X1,5	15	18	kg 0,246	NC11M040002	
		Psi 3625	inch -	3,03	1,15		1,34	0,59	0,71		lb 0,54
QC PP 18L BK FEMALE	MPa 25	mm 47	92,5	-	34	M26X1,5	15	18	kg 0,56	NC12M040002	
		Psi 3625	inch 1,85	3,64	-		1,34	0,59	0,71		lb 1,23
QC PP 22L BK MALE	MPa 25	mm -	84	29,1	34	M30X2	19	22	kg 0,298	NC11M040001	
		Psi 3625	inch -	3,31	1,15		1,34	0,75	0,87		lb 0,66
QC PP 22L BK FEMALE	MPa 25	mm 47	99,5	-	34	M30X2	19	22	kg 0,6	NC12M040001	
		Psi 3625	inch 1,85	3,92	-		1,34	0,75	0,87		lb 1,32
QC PP 22L BK MALE	MPa 25	mm -	106,5	34,34	41	M30X2	19	22	kg 0,55	NC11M050000	
		Psi 3625	inch -	4,19	1,35		1,61	0,75	0,87		lb 1,21
QC PP 22L BK FEMALE	MPa 25	mm 55	122	-	41	M30X2	19	22	kg 0,98	NC12M050000	
		Psi 3625	inch 2,17	4,80	-		1,61	0,75	0,87		lb 2,16
QC PP 28L BK MALE	MPa 25	mm -	106,5	34,34	41	M36X2	24	28	kg 0,569	NC11M050001	
		Psi 3625	inch -	4,19	1,35		1,61	0,94	1,10		lb 1,25
QC PP 28L BK FEMALE	MPa 25	mm 55	122	-	41	M36X2	24	28	kg 1	NC12M050001	
		Psi 3625	inch 2,17	4,80	-		1,61	0,94	1,10		lb 2,20