



VBP

Edition. 21.3

CS Carbon Steel

• VBPSE

- Type: single pilot operated check valves
- Sizes: from DN6 up to DN50
- Ends: BSP
- Pressure: up to PN350
- Temp range: from -20°C to +100°C
- Treatment: Galvanized

• VBPDE

- Type: double pilot operated check valves
- Sizes: from DN6 up to DN50
- Ends: BSP
- Pressure: up to PN350
- Temp range: from -20°C to +100°C
- Treatment: Galvanized

• VBPDE CEXC

- Type: double pilot operated check valves
- Sizes: from DN6 up to DN50
- Ends: BSP
- Pressure: up to PN350
- Temp range: from -20°C to +100°C
- Treatment: Galvanized



CODE DESCRIPTION STRUCTURE
VBPSE | **G1/2** | **CS**
Type and way of valve

VBPSE single pilot operated check valves

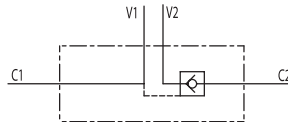
Ends

 GAS DIN/
ISO 228
BSP

 G 1/4
G 3/8
G 1/2
G 3/4

Material

● CS carbon steel


VBPDE | **G1/2** | **CS**
Type and way of valve

VBPDE double pilot operated check valves

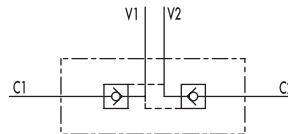
Ends

 GAS DIN/
ISO 228
BSP

 G 1/4
G 3/8
G 1/2
G 3/4

Material

● CS carbon steel


VBPDE
CEXC | **G1/2** | **CS**
Type and way of valve

VBPDE CEXC double pilot operated check valves

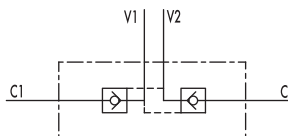
Ends

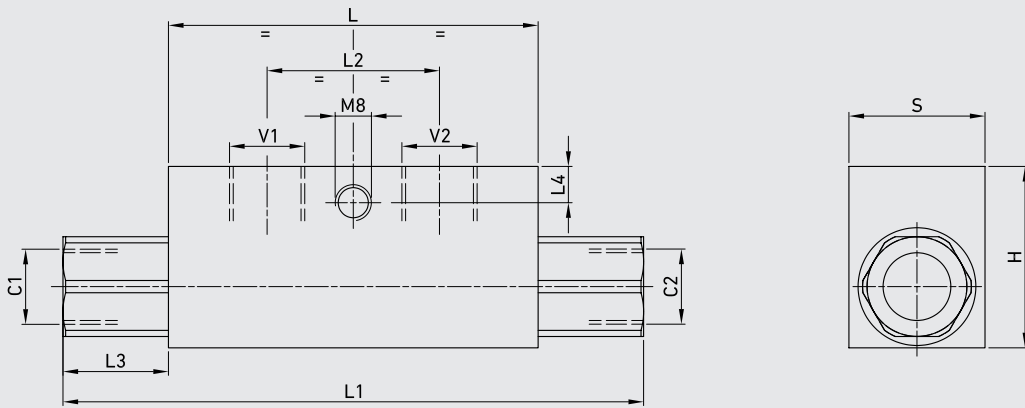
 GAS DIN/
ISO 228
BSP

 G 1/4
G 3/8
G 1/2
G 3/4

Material

● CS carbon steel





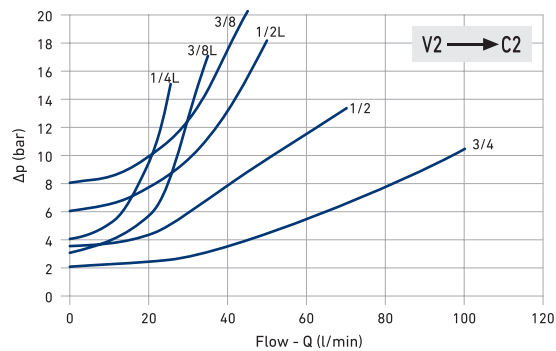
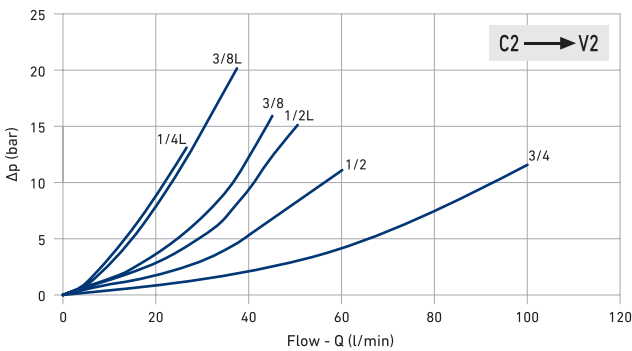
VBPSE Single pilot operated check valves

CS
Carbon Steel

TYPE	V1 - V2 C1 - C2 GAS - MET	MAX PRESSURE	CRACKING PRESSURE	L	L1	L2	L3	L4	H	S	WEIGHT	ITEM CODE		
VBPSE 1/4" L	G 1/4"	MPa	35	0,4	mm	64	106,5	36	18	8	40	30	kg 0,612	NVB2G010000
		Psi	5075	58	inch	2,52	4,19	1,42	0,71	0,31	1,57	1,18	lb 1,35	
VBPSE 3/8" L	G 3/8"	MPa	35	0,3	mm	80	120	38	16	8	40	30	kg 0,706	NVB2G020000
		Psi	5075	43,5	inch	3,15	4,72	1,50	0,63	0,31	1,57	1,18	lb 1,56	
VBPSE 1/2" L	G 1/2"	MPa	35	0,6	mm	90	133	45	17	12,5	45	35	kg 0,994	NVB2G030000
		Psi	5075	87	inch	3,54	5,24	1,77	0,67	0,49	1,77	1,38	lb 2,19	
VBPSE 3/8"	G 3/8"	MPa	35	0,8	mm	90	148	45	25	12,5	40	30	kg 1,13	NVB2G020250
		Psi	5075	116	inch	3,54	5,83	1,77	0,98	0,49	1,57	1,18	lb 2,49	
VBPSE 1/2"	G 1/2"	MPa	35	0,35	mm	80	134	40	23	18	60	35	kg 1,214	NVB2G030260
		Psi	5075	50,75	inch	3,15	5,28	1,57	0,91	0,71	2,36	1,38	lb 2,68	
VBPSE 3/4"	G 3/4"	MPa	35	0,2	mm	100	182	46	36	12	60	40	kg 1,792	NVB2G040000
		Psi	5075	29	inch	3,94	7,17	1,81	1,42	0,47	2,36	1,57	lb 3,95	

PRESSURE DROP CURVES

Temperature : 50°C / Oil viscosity: 30cSt



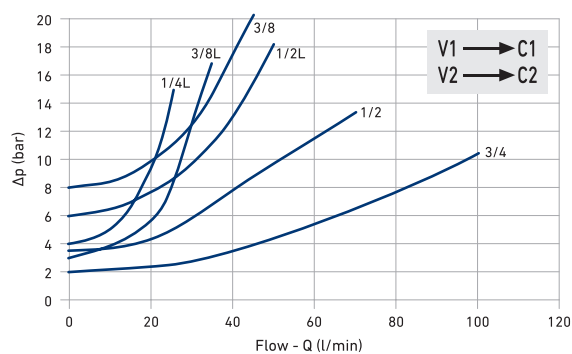
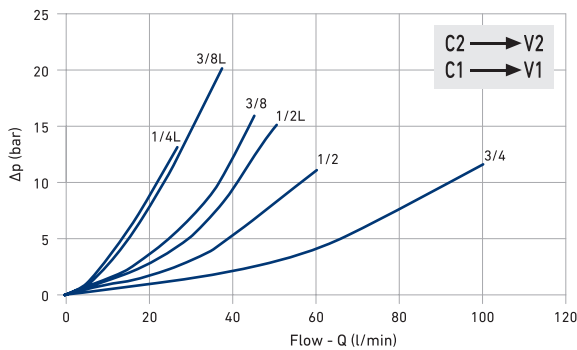
VBPDE Double pilot operated check valves

 CS
Carbon Steel

TYPE	V1 - V2 C1 - C2 GAS - MET	MAX PRESSURE	CRACKING PRESSURE	L	L1	L2	L3	L4	H	S	WEIGHT	ITEM CODE		
VBPDE 1/4"L	G 1/4"	MPa	35	0,4	mm	64	113	36	24,5	8	40	30	kg 0,636	NVB1G010000
		Psi	5075	58	inch	2,52	4,45	1,42	0,96	0,31	1,57	1,18	lb 1,40	
VBPDE 3/8"L	G 3/8"	MPa	35	0,3	mm	80	128	38	24	8	40	30	kg 0,736	NVB1G020000
		Psi	5075	43,5	inch	3,15	5,04	1,50	0,94	0,31	1,57	1,18	lb 1,62	
VBPDE 1/2" L	G 1/2"	MPa	35	0,6	mm	90	142	45	26	12,5	45	35	kg 1,042	NVB1G030000
		Psi	5075	87	inch	3,54	5,59	1,77	1,02	0,49	1,77	1,38	lb 2,30	
VBPDE 3/8"	G 3/8"	MPa	35	0,8	mm	90	156	45	33	12,5	45	35	kg 1,174	NVB1G020050
		Psi	5075	116	inch	3,54	6,14	1,77	1,30	0,49	1,77	1,38	lb 2,59	
VBPDE 1/2"	G 1/2"	MPa	35	0,35	mm	80	144	40	32	18	60	35	kg 1,284	NVB1G030070
		Psi	5075	50,75	inch	3,15	5,67	1,57	1,26	0,71	2,36	1,38	lb 2,83	
VBPDE 3/4"	G 3/4"	MPa	30	0,2	mm	100	192	46	46	12	60	40	kg 1,916	NVB1G040000
		Psi	4350	29	inch	3,94	7,56	1,81	1,81	0,47	2,36	1,57	lb 4,22	

PRESSURE DROP CURVES

Temperature : 50°C / Oil viscosity: 30cSt


VBPDE CEXC Double pilot operated check valves for 12mm pipe mounting din (2353)

TYPE	V1 - V2 C1 - C2 GAS - MET	MAX PRESSURE	CRACKING PRESSURE	L	L1	L2	L3	H	S	WEIGHT		
VBPDE 1/4" L 2 CEXC-10L	G 1/4"	MPa	35	0,7	mm	64	125	36	160	40	30	kg 0,644
		Psi	5075	101,5	inch	2,52	4,92	1,42	6,30	1,57	1,18	lb 1,42
VBPDE 1/4" L 2 CEXC	G 1/4"	MPa	35	0,4	mm	64	130	36	160	40	30	kg 0,648
		Psi	5075	58	inch	2,52	5,12	1,42	6,30	1,57	1,18	lb 1,43
VBPDE 3/8" L 2 CEXC	G 3/8"	MPa	35	0,4	mm	64	130	36	166	40	30	kg 0,630
		Psi	5075	58	inch	2,52	5,12	1,42	6,54	1,57	1,18	lb 1,39

PRESSURE DROP CURVES

Temperature : 50°C / Oil viscosity: 30cSt

