

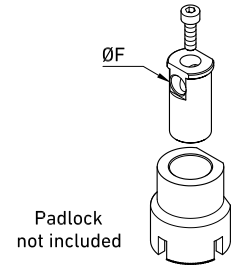


LOCKING DEVICE

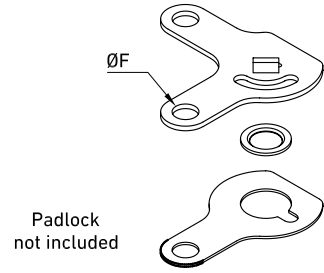
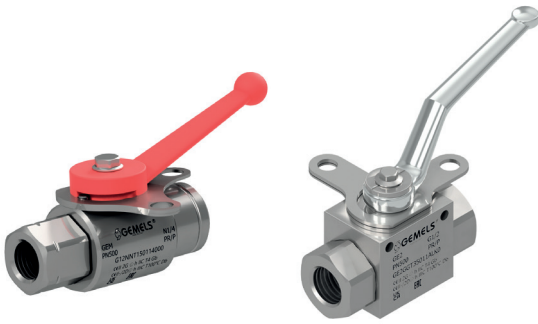
Edition. 21.3

- **LKB** FOR GM - GN
- **LKF** FOR GE - GB - GHP - GPK
- **LKR** FOR GR
- **SECURITY BLOCK** FOR GE - GB
GHP - GPK (except DN6) - G3/4K
- **LKS** FOR SBF - SBF-W



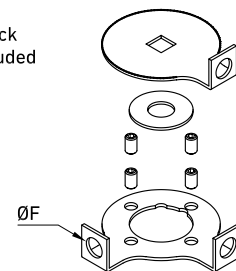

LKB FOR GM - GN

| TYPE | DN | SW | ØF | MATERIAL | TREATMENT | WEIGHT | ITEM CODE | | |
|--------|----------|------|------|----------|-----------------|------------|-----------|-------|--------------|
| LK6-B | 6-10-13 | mm | 9 | 9,5 | CARBON STEEL | GALVANIZED | kg | 0,178 | KMK00LK6B2Z |
| | | inch | 0,35 | | | | 0,37 | lb | |
| LK6-B | 6-10-13 | mm | 9 | 9,5 | STAINLESS STEEL | - | kg | 0,178 | KMK00LK6B6H |
| | | inch | 0,35 | | | | 0,37 | lb | |
| LK20-B | 20-25 | mm | 14 | 10,5 | CARBON STEEL | GALVANIZED | kg | 0,413 | KMK00LK20B2Z |
| | | inch | 0,55 | | | | 0,41 | lb | |
| LK20-B | 20-25 | mm | 14 | 10,5 | STAINLESS STEEL | - | kg | 0,413 | KMK00LK20B6H |
| | | inch | 0,55 | | | | 0,41 | lb | |
| LK32-B | 32-40-50 | mm | 17 | 10,5 | CARBON STEEL | GALVANIZED | kg | 0,53 | KMK00LK32B2Z |
| | | inch | 0,67 | | | | 0,41 | lb | |
| LK32-B | 32-40-50 | mm | 17 | 10,5 | STAINLESS STEEL | - | kg | 0,53 | KMK00LK32B6H |
| | | inch | 0,67 | | | | 0,41 | lb | |

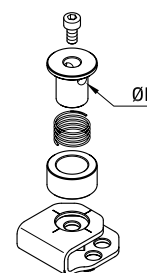


LKF FOR GE - GB - GHP - GPK

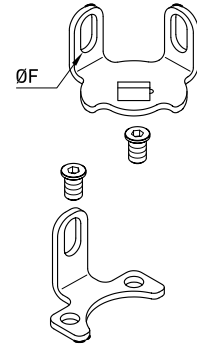
| TYPE | DN | SW | ØF | MATERIAL | TREATMENT | WEIGHT | ITEM CODE |
|--------|----------------|-----------|------|-----------------|------------|----------|--------------|
| LK6-MF | 6 only for GPK | mm 6 | 6,8 | CARBON STEEL | GALVANIZED | kg 0,043 | K0K00LK6MF2Z |
| | | inch 0,24 | 0,27 | | | lb 0,09 | |
| LK6-F | 6-10-13 | mm 9 | 9,5 | CARBON STEEL | GALVANIZED | kg 0,043 | K0K00LK6F2Z |
| | | inch 0,35 | 0,37 | | | lb 0,09 | |
| LK6-F | 6-10-13 | mm 9 | 9,5 | STAINLESS STEEL | - | kg 0,043 | K0K00LK6F6H |
| | | inch 0,35 | 0,37 | | | lb 0,09 | |
| LK20-F | 20-25 | mm 14 | 9,5 | CARBON STEEL | GALVANIZED | kg 0,121 | K0K00LK20F2Z |
| | | inch 0,55 | 0,37 | | | lb 0,27 | |
| LK20-F | 20-25 | mm 14 | 9,5 | STAINLESS STEEL | - | kg 0,121 | K0K00LK20F6H |
| | | inch 0,55 | 0,37 | | | lb 0,27 | |
| LK32-F | 32-40-50 | mm 17 | 9,5 | CARBON STEEL | GALVANIZED | kg 0,187 | K0K00LK32F2Z |
| | | inch 0,67 | 0,37 | | | lb 0,41 | |
| LK32-F | 32-40-50 | mm 17 | 9,5 | STAINLESS STEEL | - | kg 0,187 | K0K00LK32F6H |
| | | inch 0,67 | 0,37 | | | lb 0,41 | |


 Padlock
not included

LKR FOR GR

| TYPE | DN | SW | ØF | MATERIAL | TREATMENT | WEIGHT | ITEM CODE |
|--------|----------|-----------|------|-----------------|------------|---------|---------------|
| LKR13 | 13 | mm 9 | 9,5 | CARBON STEEL | GALVANIZED | kg 0,1 | K0K00LKR132Z |
| | | inch 0,35 | 0,37 | | | lb 0,22 | |
| LKR13 | 13 | mm 9 | 9,5 | STAINLESS STEEL | - | kg 0,1 | K0K00LKR136H |
| | | inch 0,35 | 0,37 | | | lb 0,22 | |
| LKR20 | 20-25 | mm 14 | 9,5 | CARBON STEEL | GALVANIZED | kg 0,18 | K0K00LKR202Z |
| | | inch 0,55 | 0,37 | | | lb 0,40 | |
| LKR20 | 20-25 | mm 14 | 9,5 | STAINLESS STEEL | - | kg 0,18 | K0K00LKR206H |
| | | inch 0,55 | 0,37 | | | lb 0,40 | |
| LKR32 | 32-40-50 | mm 17 | 9,5 | CARBON STEEL | GALVANIZED | kg 0,34 | K0K00LKR322Z |
| | | inch 0,67 | 0,37 | | | lb 0,75 | |
| LKR32 | 32-40-50 | mm 17 | 9,5 | STAINLESS STEEL | - | kg 0,34 | K0K00LKR326H |
| | | inch 0,67 | 0,37 | | | lb 0,75 | |
| LKR65 | 65-80 | mm 19 | 9,5 | CARBON STEEL | GALVANIZED | kg 0,55 | K0K00LKR652Z |
| | | inch 0,75 | 0,37 | | | lb 1,21 | |
| LKR65 | 65-80 | mm 19 | 9,5 | STAINLESS STEEL | - | kg 0,55 | K0K00LKR656H |
| | | inch 0,75 | 0,37 | | | lb 1,21 | |
| LKR100 | 100 | mm 24 | 9,5 | CARBON STEEL | GALVANIZED | kg 1,08 | K0K00LKR1002Z |
| | | inch 0,94 | 0,37 | | | lb 2,38 | |
| LKR100 | 100 | mm 24 | 9,5 | STAINLESS STEEL | - | kg 1,08 | K0K00LKR1006H |
| | | inch 0,94 | 0,37 | | | lb 2,38 | |

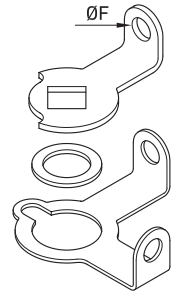

SECURITY BLOCK FOR GE - GB - GHP - GPK (EXCEPT DN6) - G3/4K

| TYPE | DN | SW | ØF | MATERIAL | TREATMENT | WEIGHT | ITEM CODE |
|------|----------------------------------|-----------|------|--------------|------------|----------|-------------|
| SB6 | 6-10-13 6 only for G3/4K | mm 9 | 6,8 | CARBON STEEL | GALVANIZED | kg 0,066 | K0B00SB61Z |
| | | inch 0,35 | 0,27 | | | lb 0,15 | |
| SB20 | 20-25 10-13-20 only for G3/4K | mm 14 | 9,5 | CARBON STEEL | GALVANIZED | kg 0,221 | K0B00SB201Z |
| | | inch 0,55 | 0,37 | | | lb 0,49 | |
| SB32 | 32-40-50 25 only for G3/4K | mm 17 | 9,5 | CARBON STEEL | GALVANIZED | kg 0,24 | K0B00SB321Z |
| | | inch 0,67 | 0,37 | | | lb 0,53 | |



LKS FOR SBF - SBF-W

| TYPE | DN | ANSI | SW | | ØF | MATERIAL | TREATMENT | WEIGHT | |
|--------------|----------|--------------------------------|------|------|------|-----------------|------------|--------|------|
| LK13 - S | 13 | 150-300-600 | mm | 9 | 6,5 | CARBON STEEL | GALVANIZED | kg | 0,03 |
| | | | inch | 0,35 | 0,26 | | | lb | 0,07 |
| LK13 - S | 13 | 150-300-600 | mm | 9 | 6,5 | STAINLESS STEEL | - | kg | 0,03 |
| | | | inch | 0,35 | 0,26 | | | lb | 0,07 |
| LK20 - S 150 | 20 | 150 | mm | 14 | 6,5 | CARBON STEEL | GALVANIZED | kg | 0,07 |
| | | | inch | 0,55 | 0,26 | | | lb | 0,15 |
| LK20 - S 150 | 20 | 150 | mm | 14 | 6,5 | STAINLESS STEEL | - | kg | 0,07 |
| | | | inch | 0,55 | 0,26 | | | lb | 0,15 |
| LK20 - S | 20-25 | 150 (only for DN25) 300-600 | mm | 14 | 6,5 | CARBON STEEL | GALVANIZED | kg | 0,07 |
| | | | inch | 0,55 | 0,26 | | | lb | 0,15 |
| LK20 - S | 20-25 | 150 (only for DN25) 300-600 | mm | 14 | 6,5 | STAINLESS STEEL | - | kg | 0,07 |
| | | | inch | 0,55 | 0,26 | | | lb | 0,15 |
| LK32 - S | 32-40-50 | 150-300-600 | mm | 17 | 6,5 | CARBON STEEL | GALVANIZED | kg | 0,08 |
| | | | inch | 0,67 | 0,26 | | | lb | 0,18 |
| LK32 - S | 32-40-50 | 150-300-600 | mm | 17 | 6,5 | STAINLESS STEEL | - | kg | 0,08 |
| | | | inch | 0,67 | 0,26 | | | lb | 0,18 |
| LK80 - S | 80 | 150-300-600 | mm | 19 | 10 | CARBON STEEL | GALVANIZED | kg | 0,16 |
| | | | inch | 0,75 | 0,39 | | | lb | 0,35 |
| LK80 - S | 80 | 150-300-600 | mm | 19 | 10 | STAINLESS STEEL | - | kg | 0,16 |
| | | | inch | 0,75 | 0,39 | | | lb | 0,35 |
| LK100 - S | 100 | 150-300-600 | mm | 24 | 12 | CARBON STEEL | GALVANIZED | kg | 0,3 |
| | | | inch | 0,94 | 0,47 | | | lb | 0,66 |
| LK100 - S | 100 | 150-300-600 | mm | 24 | 12 | STAINLESS STEEL | - | kg | 0,3 |
| | | | inch | 0,94 | 0,47 | | | lb | 0,66 |



LKF LS (LIMIT SWITCH) FOR GE - GHP - GPK (EXCEPT DN6)

| TYPE | DN | SW | ØF | MATERIAL | TREATMENT | WEIGHT | ITEM CODE |
|-----------|----------|-----------|------|-----------------|------------|----------|-----------------|
| LK6-F LS | 6-10-13 | mm 9 | 9,5 | CARBON STEEL | GALVANIZED | kg 0,019 | K11A00207AA000Z |
| | | inch 0,35 | 0,37 | | | lb 0,04 | |
| LK6-F LS | 6-10-13 | mm 9 | 9,5 | STAINLESS STEEL | - | kg 0,019 | K11A00207AA000H |
| | | inch 0,35 | 0,37 | | | lb 0,04 | |
| LK20-F LS | 20-25 | mm 14 | 9,5 | CARBON STEEL | GALVANIZED | kg 0,056 | K11A00208AA000Z |
| | | inch 0,55 | 0,37 | | | lb 0,12 | |
| LK20-F LS | 20-25 | mm 14 | 9,5 | STAINLESS STEEL | - | kg 0,056 | K11A00208AA000H |
| | | inch 0,55 | 0,37 | | | lb 0,12 | |
| LK32-F LS | 32-40-50 | mm 17 | 9,5 | CARBON STEEL | GALVANIZED | kg 0,055 | K11A00209AA000Z |
| | | inch 0,67 | 0,37 | | | lb 0,12 | |
| LK32-F LS | 32-40-50 | mm 17 | 9,5 | STAINLESS STEEL | - | kg 0,055 | K11A00209AA000H |
| | | inch 0,67 | 0,37 | | | lb 0,12 | |