



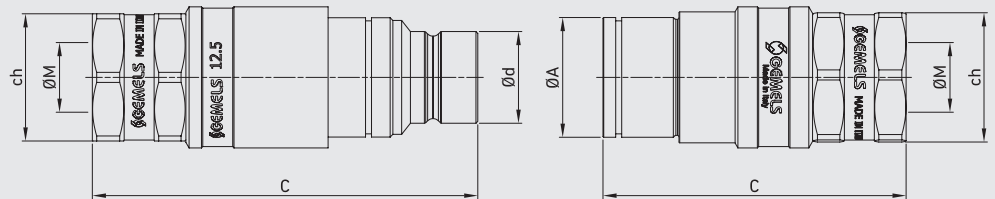
FFAP PLATE CONNECTION UNDER PRESSURE

Edition. 21.0

CS Carbon Steel

- Carbon Steel
- Type: Quick Couplings
- Models: ISO 16028 FLAT FACE CONNECTION UNDER PRESSURE
- Sizes: from DN10 to DN25
- Pressure: up to PN420
- Treatment: Galvanized

STANDARD COMPOSITION OF VALVE





CODE DESCRIPTION STRUCTURE

QC							G 1/2	M/F	DN12,5	1	B
----	--	--	--	--	--	--	-------	-----	--------	---	---

Type of coupling

FFAP Flat Face connection
under pressure multi Gemels

Ends

ISO 1179-1	ISO 8434-6	ASME B1.20.1	ISO 11926-1	ISO 8434-1-L	ISO 8434-1-S	ISO 8434-1-L	ISO 8434-1-S	8434-2
BSPP	BSPP	NPT	(SAE J1926-1) (DIN 2353)	(DIN 2353)	(DIN 2353)	(DIN 2353)	(DIN 2353)	(SAE J514)
			ORB			BULKHEAD	BULKHEAD	JIC
G 3/8	G 3/8	N 3/8	SAE6	10L	12S	10L	12S	J 3/8
G 1/2	G 1/2	N 1/2	SAE8	12L	/	12L	/	J 1/2
/	/	/	/	15L	/	15L	/	J 5/8
G 1/2	G 1/2	N 1/2	SAE8	12L	/	12L	16S	J 1/2
G 3/4	G 3/4	N 3/4	SAE12	15L	/	15L	/	J 5/8
/	/	/	/	18L	/	/	/	J 3/4
/	/	/	/	/	/	/	/	J 1
G 3/4	G 3/4	N 3/4	SAE12	18L	/	18L	20S	/
G1	G1	N 1	SAE16	22L	/	22L	25S	/
G1	G1	N1	SAE16	/	25S	/	25S	/
G1 1/4	G1 1/4	N1 1/4	SAE20	/	/	/	/	/
G1 1/2	G1 1/2	N1 1/2	/	/	/	/	/	/

MALE

FEMALE

DN/ISO

10
10
10
12,5
12,5
12,5
12,5
19
19
25
25
25

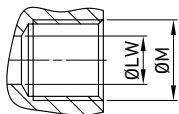
Body Material

● 1 = 1,0737

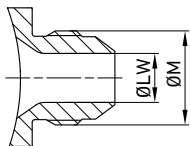
Seal material

● B = NBR E = FKM*

*On request Plugs

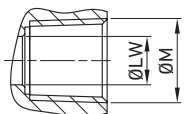

**QUICK COUPLINGS FLAT FACE CONNECTION UNDER PRESSURE (FFAP PLATE MOUNTING)
(male/female) FEMALE THREAD ISO 1179-1 BSPP**

											CS Carbon Steel		
TYPE	DN	PN		ØA	C	Ød	ch	ØM	WEIGHT		ITEM CODE		
QC FFAP PLATE G 3/8 MALE	10	MPa	42	mm	-	91,5	19,75	30	G 3/8	kg	0,36	NC43G020000	
		Psi	6090	inch	-	3,60	0,78	1,18		lb	0,79		
QC FFAP PLATE G 3/8 FEMALE		MPa	42	mm	25	75	-	30	G 3/8	kg	0,3	NC44G020000	
		Psi	6090	inch	0,98	2,95	-	1,18		lb	0,66		
QC FFAP PLATE G 1/2 MALE		MPa	42	mm	-	95,6	19,75	30	G 1/2	kg	0,45	NC43G020001	
		Psi	6090	inch	-	3,76	0,78	1,18		lb	0,99		
QC FFAP PLATE G 1/2 FEMALE		MPa	42	mm	25	79	-	30	G 1/2	kg	0,4	NC44G020001	
		Psi	6090	inch	0,98	3,11	-	1,18		lb	0,88		
QC FFAP PLATE G 1/2 MALE		12,5	MPa	42	mm	-	103	24,5	34	G 1/2	kg	0,65	NC43G030000
			Psi	6090	inch	-	4,06	0,96	1,34		lb	1,43	
QC FFAP PLATE G 1/2 FEMALE	MPa		42	mm	32	81	-	34	G 1/2	kg	0,6	NC44G030000	
	Psi		6090	inch	1,26	3,19	-	1,34		lb	1,32		
QC FFAP PLATE G 3/4 MALE	MPa		42	mm	-	106	24,5	34	G 3/4	kg	0,7	NC43G030001	
	Psi		6090	inch	-	4,17	0,96	1,34		lb	1,54		
QC FFAP PLATE G 3/4 FEMALE	MPa		42	mm	32	84	-	34	G 3/4	kg	0,61	NC44G030001	
	Psi		6090	inch	1,26	3,31	-	1,34		lb	1,34		
QC FFAP PLATE G 3/4 MALE	19		MPa	35	mm	-	128,5	29,95	41	G 3/4	kg	0,85	NC43G040000
			Psi	5075	inch	-	5,06	1,18	1,61		lb	1,87	
QC FFAP PLATE G 1 MALE		MPa	35	mm	-	132	29,95	41	G 1	kg	0,9	NC43G040001	
		Psi	5075	inch	-	5,20	1,18	1,61		lb	1,98		
QC FFAP PLATE G 1 MALE		25	MPa	35	mm	-	143	36	50	G 1	kg	1,35	NC43G050000
			Psi	5075	inch	-	5,63	1,42	1,97		lb	2,98	
QC FFAP PLATE G 1 1/4 MALE			MPa	35	mm	-	145,7	36	50	G1 1/4	kg	1,4	NC43G050001
			Psi	5075	inch	-	5,74	1,42	1,97		lb	3,09	
QC FFAP PLATE G 1 1/2 MALE			MPa	35	mm	-	145,7	36	55	G1 1/2	kg	1,45	NC43G050002
			Psi	5075	inch	-	5,74	1,42	2,17		lb	3,20	

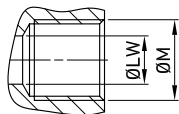


■ QUICK COUPLINGS FLAT FACE CONNECTION UNDER PRESSURE (FFAP PLATE MOUNTING) (male/female) MALE THREAD ISO 8434-6 BSPP

											CS Carbon Steel		
TYPE	DN	PN		ØA	C	Ød	ch	ØM	WEIGHT		ITEM CODE		
QC FFAP PLATE G 3/8M MALE	10	MPa	42	mm	-	95,2	19,75	30	G 3/8M	kg	0,45	NC43E020000	
		Psi	6090	inch	-	3,75	0,78	1,18		lb	0,99		
QC FFAP PLATE G 3/8M FEMALE		MPa	42	mm	25	78,7		30	G 3/8M	kg	0,35	NC44E020000	
		Psi	6090	inch	0,98	3,10		1,18		lb	0,77		
QC FFAP PLATE G 1/2M MALE		MPa	42	mm	-	97,2	19,75	30	G 1/2M	kg	0,54	NC43E020001	
		Psi	6090	inch	-	3,83	0,78	1,18		lb	1,19		
QC FFAP PLATE G 1/2M FEMALE		MPa	42	mm	25	80,7		30	G 1/2M	kg	0,44	NC44E020001	
		Psi	6090	inch	0,98	3,18		1,18		lb	0,97		
QC FFAP PLATE G 1/2M MALE		12,5	MPa	42	mm	-	105	24,5	34	G 1/2M	kg	0,57	NC43E030000
QC FFAP PLATE G 1/2M FEMALE			Psi	6090	inch	-	4,13	0,96	1,34	G 1/2M	lb	1,26	NC44E030000
	MPa		42	mm	32	83		34	kg		0,42		
QC FFAP PLATE G 3/4M MALE	Psi		6090	inch	1,26	3,27		1,34	G 3/4M	lb	0,93	NC43E030001	
	MPa		42	mm	-	107	24,5	34		kg	0,65		
QC FFAP PLATE G 3/4M FEMALE	Psi		6090	inch	-	4,21	0,96	1,34	G 3/4M	lb	1,43	NC44E030001	
	MPa		42	mm	32	85		34		kg	0,58		
QC FFAP PLATE G 3/4M MALE	MPa		35	mm	-	131,3	29,95	41	G 3/4M	lb	1,28	NC43E040000	
	Psi	5075	inch	-	5,17	1,18	1,61	kg		0,8			
QC FFAP PLATE G 1M MALE	MPa	35	mm	-	134,3	29,95	41	G 1M	lb	1,76	NC43E040001		
	Psi	5075	inch	-	5,29	1,18	1,61		kg	0,9			
QC FFAP PLATE G 1M MALE	25	MPa	35	mm	-	149,2	36	50	G 1M	lb	1,98	NC43E050000	
		Psi	5075	inch	-	5,87	1,42	1,97		kg	1,45		
QC FFAP PLATE G 1 1/4M MALE		MPa	35	mm	-	150,2	36	50	G1 1/4M	lb	3,20	NC43E050001	
		Psi	5075	inch	-	5,91	1,42	1,97		kg	1,55		
QC FFAP PLATE G 1 1/2M MALE		MPa	35	mm	-	152,2	36	55	G1 1/2M	lb	3,42	NC43E050002	
		Psi	5075	inch	-	5,99	1,42	2,17		kg	1,66		
										lb	3,66		

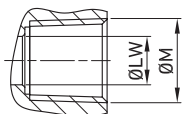

QUICK COUPLINGS FLAT FACE CONNECTION UNDER PRESSURE (FFAP PLATE MOUNTING) (male/female) FEMALE THREAD ASME B1.20.1 NPT

											CS Carbon Steel		
TYPE	DN	PN		ØA	C	Ød	ch	ØM	WEIGHT		ITEM CODE		
QC FFAP PLATE N 3/8 MALE	10	MPa	42	mm	-	93,5	19,75	30	N 3/8	kg	0,43	NC43N020000	
		Psi	6090	inch	-	3,68	0,78	1,18		lb	0,95		
QC FFAP PLATE N 3/8 FEMALE		MPa	42	mm	25	77	-	30	N 3/8	kg	0,4	NC44N020000	
		Psi	6090	inch	0,98	3,03	-	1,18		lb	0,88		
QC FFAP PLATE N 1/2 MALE		MPa	42	mm	-	98,3	19,75	30	N 1/2	kg	0,45	NC43N020001	
		Psi	6090	inch	-	3,87	0,78	1,18		lb	0,99		
QC FFAP PLATE N 1/2 FEMALE		MPa	42	mm	25	82	-	30	N 1/2	kg		NC44N020001	
		Psi	6090	inch	0,98	3,23	-	1,18		lb	0,00		
QC FFAP PLATE N 1/2 MALE		12,5	MPa	42	mm	-	103	24,5	34	N 1/2	kg	0,65	NC43N030000
			Psi	6090	inch	-	4,06	0,96	1,34		lb	1,43	
QC FFAP PLATE N 1/2 FEMALE			MPa	42	mm	32	81	-	34	N 1/2	kg	0,6	NC44N030000
			Psi	6090	inch	1,26	3,19	-	1,34		lb	1,32	
QC FFAP PLATE N 3/4 MALE	MPa		42	mm	-	106	24,5	34	N 3/4	kg	0,7	NC43N030001	
	Psi		6090	inch	-	4,17	0,96	1,34		lb	1,54		
QC FFAP PLATE N 3/4 FEMALE	MPa		42	mm	32	84	-	34	N 3/4	kg	0,61	NC44N030001	
	Psi		6090	inch	1,26	3,31	-	1,34		lb	1,34		
QC FFAP PLATE N 3/4 MALE	19		MPa	35	mm	-	128,5	29,95	41	N 3/4	kg	0,85	NC43N040000
			Psi	5075	inch	-	5,06	1,18	1,61		lb	1,87	
QC FFAP PLATE N 1 MALE			MPa	35	mm	-	132	29,95	41	N 1	kg	0,9	NC43N040001
			Psi	5075	inch	-	5,20	1,18	1,61		lb	1,98	
QC FFAP PLATE N 1 MALE		MPa	35	mm	-	143	36	50	N 1	kg	1,35	NC43N050000	
		Psi	5075	inch	-	5,63	1,42	1,97		lb	2,98		
QC FFAP PLATE N 1 1/4 MALE		MPa	35	mm	-	145,7	36	50	N1 1/4	kg	1,4	NC43N050001	
		Psi	5075	inch	-	5,74	1,42	1,97		lb	3,09		
QC FFAP PLATE N 1 1/2 MALE		MPa	35	mm	-	145,7	36	55	N1 1/2	kg	1,45	NC43N050002	
		Psi	5075	inch	-	5,74	1,42	2,17		lb	3,20		

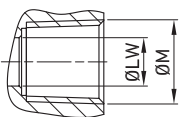


■ QUICK COUPLINGS FLAT FACE CONNECTION UNDER PRESSURE (FFAP PLATE MOUNTING) (male/female) MALE THREAD ISO 8434-6 BSPP

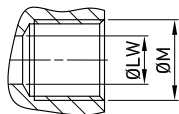
											CS Carbon Steel		
TYPE	DN	PN		ØA	C	Ød	ch	ØM	WEIGHT		ITEM CODE		
QC FFAP PLATE SAE6 MALE	10	MPa	42	mm	-	92,6	19,75	30	9/16-18	kg	0,4	NC43S020000	
		Psi	6090	inch	-	3,65	0,78	1,18	UNF	lb	0,88		
QC FFAP PLATE SAE6 FEMALE		MPa	42	mm	25	76	-	30	9/16-18	kg		NC44S020000	
		Psi	6090	inch	0,98	2,99	-	1,18	UNF	lb	0,00		
QC FFAP PLATE SAE8 MALE		MPa	42	mm	-	95,6	19,75	30	3/4-16	kg	0,43	NC43S020001	
		Psi	6090	inch	-	3,76	0,78	1,18	UNF	lb	0,95		
QC FFAP PLATE SAE8 FEMALE		MPa	42	mm	25	79	-	30	3/4-16	kg		NC44S020001	
		Psi	6090	inch	0,98	3,11	-	1,18	UNF	lb	0,00		
QC FFAP PLATE SAE 8 MALE		12,5	MPa	42	mm	-	103	24,5	34	3/4-16	kg	0,65	NC43S030000
			Psi	6090	inch	-	4,06	0,96	1,34	UNF	lb	1,43	
QC FFAP PLATE SAE8 FEMALE	MPa		42	mm	32	81	-	34	3/4-16	kg	0,6	NC44S030000	
	Psi		6090	inch	1,26	3,19	-	1,34	UNF	lb	1,32		
QC FFAP PLATE SAE12 MALE	MPa		42	mm	-	106	24,5	34	1-1/16-12	kg	0,7	NC43S030001	
	Psi		6090	inch	-	4,17	0,96	1,34	UN	lb	1,54		
QC FFAP PLATE SAE12 FEMALE	MPa		42	mm	32	84	-	34	1-1/16-12	kg	0,61	NC44S030001	
	Psi		6090	inch	1,26	3,31	-	1,34	UN	lb	1,34		
QC FFAP PLATE SAE12 MALE	19		MPa	35	mm	-	128,5	29,95	41	1-1/16-12	kg	0,85	NC43S040000
			Psi	5075	inch	-	5,06	1,18	1,61	UN	lb	1,87	
QC FFAP PLATE SAE16 MALE		MPa	35	mm	-	132	29,95	41	1 5/16-12	kg	0,9	NC43S040001	
		Psi	5075	inch	-	5,20	1,18	1,61	UN	lb	1,98		
QC FFAP PLATE SAE16 MALE		25	MPa	35	mm	-	143	36	50	1 5/16-12	kg	1,35	NC43S050000
			Psi	5075	inch	-	5,63	1,42	1,97	UN	lb	2,98	
QC FFAP PLATE G 1 1/2M MALE	MPa		35	mm	-	145,7	36	50	1 5/8-12	kg	1,4	NC43S050001	
	Psi		5075	inch	-	5,74	1,42	1,97	UN	lb	3,09		


**QUICK COUPLINGS FLAT FACE CONNECTION UNDER PRESSURE (FFAP PLATE MOUNTING)
(male/female) MALE THREAD METRIC ISO 8434-1-L (DIN 2353)**

											CS Carbon Steel		
TYPE	DN	PN		ØA	C	Ød	ch	ØM	WEIGHT		ITEM CODE		
QC FFAP PLATE 10L MALE	10	MPa 42	mm -	97,2	19,75	30	M16x1,5		kg	0,4	NC43L020000		
		Psi 6090	inch -	3,83	0,78	1,18			lb	0,88			
QC FFAP PLATE 10L FEMALE		MPa 42	mm 25	80,7	-	30	M16x1,5		kg	0,44	NC44L020000		
		Psi 6090	inch 0,98	3,18	-	1,18			lb	0,97			
QC FFAP PLATE 12L MALE		10	MPa 42	mm -	97,2	19,75	30	M18x1,5		kg	0,415	NC43L020001	
			Psi 6090	inch -	3,83	0,78	1,18			lb	0,91		
QC FFAP PLATE 12L FEMALE		10	MPa 42	mm 25	80,7	-	30	M18x1,5		kg	0,445	NC44L020001	
			Psi 6090	inch 0,98	3,18	-	1,18			lb	0,98		
QC FFAP PLATE 15L MALE		10	MPa 42	mm -	98,2	19,75	30	M22x1,5		kg	0,42	NC43L020002	
			Psi 6090	inch -	3,87	0,78	1,18			lb	0,93		
QC FFAP PLATE 15L FEMALE	MPa 42		mm 25	81,7	-	30	M22x1,5		kg	0,45	NC44L020002		
	Psi 6090		inch 0,98	3,22	-	1,18			lb	0,99			
QC FFAP PLATE 12L MALE	12,5		MPa 42	mm -	102	24,5	34	M18x1,5		kg	0,57	NC43L030000	
			Psi 6090	inch -	4,02	0,96	1,34			lb	1,26		
QC FFAP PLATE 12L FEMALE			MPa 42	mm 32	80	-	34	M18x1,5		kg	0,42	NC44L030000	
			Psi 6090	inch 1,26	3,15	-	1,34			lb	0,93		
QC FFAP PLATE 15L MALE			12,5	MPa 42	mm -	103	24,5	34	M22x1,5		kg	0,57	NC43L030001
				Psi 6090	inch -	4,06	0,96	1,34			lb	1,26	
QC FFAP PLATE 15L FEMALE		12,5	MPa 42	mm 32	81	-	34	M22x1,5		kg	0,41	NC44L030001	
			Psi 6090	inch 1,26	3,19	-	1,34			lb			
QC FFAP PLATE 18L MALE		12,5	MPa 42	mm -	103	24,5	34	M26x1,5		kg	0,57	NC43L030002	
			Psi 6090	inch -	4,06	0,96	1,34			lb			
QC FFAP PLATE 18L FEMALE	MPa 42		mm 32	81	-	34	M26x1,5		kg	0,41	NC44L030002		
	Psi 6090		inch 1,26	3,19	-	1,34			lb	0,90			
QC FFAP PLATE 18L MALE	19		MPa 35	mm -	127,3	29,95	41	M26x1,5		kg	0,77	NC43L040000	
			Psi 5075	inch -	5,01	1,18	1,61			lb	1,70		
QC FFAP PLATE 22L MALE			MPa 35	mm -	129,3	29,95	41	M30x2		kg	0,77	NC43L040001	
			Psi 5075	inch -	5,09	1,18	1,61			lb	1,70		

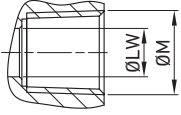

**QUICK COUPLINGS FLAT FACE CONNECTION UNDER PRESSURE (FFAP PLATE MOUNTING)
(male/female) MALE THREAD METRIC ISO 8434-1-L (DIN 2353)**

											CS Carbon Steel
TYPE	DN	PN		ØA	C	Ød	ch	ØM	WEIGHT		ITEM CODE
QC FFAP PLATE 12S MALE	10	MPa 42	mm -	98,2	19,75	30	M18x1,5		kg	0,42	NC43H020000
		Psi 6090	inch -	3,87	0,78	1,18			lb	0,93	
QC FFAP PLATE 12S FEMALE		MPa 42	mm 25	81,7	-	30	M18x1,5		kg	0,45	NC44H020000
		Psi 6090	inch 0,98	3,22	-	1,18			lb	0,99	
QC FFAP PLATE 25S MALE	25	MPa 35	mm -	148,2	36	50	M36x2		kg	1,36	NC43H050000
		Psi 5075	inch -	5,83	1,42	1,97			lb	3,00	



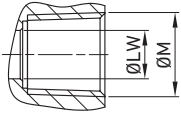
QUICK COUPLINGS FLAT FACE CONNECTION UNDER PRESSURE (FFAP PLATE MOUNTING) (male/female) MALE THREAD METRIC ISO 8434-1-L (DIN 2353) BULKHEAD

TYPE	DN	PN		ØA	C	Ød	ch	ØM	WEIGHT	CS Carbon Steel			
										ITEM CODE			
QC FFAP PLATE 10L BK MALE	10	MPa	42	mm	-	112,2	19,75	30	M16x1,5	kg	0,43	NC43M020000	
		Psi	6090	inch	-	4,42	0,78	1,18		lb	0,95		
QC FFAP PLATE 10L BK FEMALE		MPa	42	mm	25	95,7	-	30	M16x1,5	kg	0,46	NC44M020000	
		Psi	6090	inch	0,98	3,77	-	1,18		lb	1,01		
QC FFAP PLATE 12L BK MALE		MPa	42	mm	-	113,2	19,75	30	M18x1,5	kg	0,43	NC43M020001	
		Psi	6090	inch	-	4,46	0,78	1,18		lb	0,95		
QC FFAP PLATE 12L BK FEMALE		MPa	42	mm	25	96,7	-	30	M18x1,5	kg	0,46	NC44M020001	
		Psi	6090	inch	0,98	3,81	-	1,18		lb	1,01		
QC FFAP PLATE 15L BK MALE		MPa	42	mm	-	113,2	19,75	30	M22x1,5	kg	0,45	NC43M020002	
		Psi	6090	inch	-	4,46	0,78	1,18		lb	0,99		
QC FFAP PLATE 15L BK FEMALE	MPa	42	mm	25	96,7	-	30	M22x1,5	kg	0,48	NC44M020002		
	Psi	6090	inch	0,98	3,81	-	1,18		lb	1,06			
QC FFAP PLATE 12L BK MALE	12,5	MPa	42	mm	-	118	24,5	34	M18x1,5	kg	0,58	NC43M030000	
		Psi	6090	inch	-	4,65	0,96	1,34		lb	1,28		
QC FFAP PLATE 12L BK FEMALE		MPa	42	mm	32	96	-	34	M18x1,5	kg	0,43	NC44M030000	
		Psi	6090	inch	1,26	3,78	-	1,34		lb	0,95		
QC FFAP PLATE 15L BK MALE		MPa	42	mm	-	118	24,5	34	M22x1,5	kg	0,6	NC43M030001	
		Psi	6090	inch	-	4,65	0,96	1,34		lb	1,32		
QC FFAP PLATE 15L BK FEMALE		MPa	42	mm	32	100	-	34	M22x1,5	kg	0,45	NC44M030001	
		Psi	6090	inch	1,26	3,94	-	1,34		lb	0,99		
QC FFAP PLATE 18L BK MALE		19	MPa	35	mm	-	142,3	29,95	41	M26x1,5	kg	0,81	NC43M040000
			Psi	5075	inch	-	5,60	1,18	1,61		lb	1,79	
QC FFAP PLATE 22L BK MALE	MPa		35	mm	-	149,3	29,95	41	M30x2	kg	0,84	NC43M040001	
	Psi		5075	inch	-	5,88	1,18	1,61		lb	1,85		


QUICK COUPLINGS FLAT FACE CONNECTION UNDER PRESSURE (FFAP PLATE MOUNTING) (male/female) MALE THREAD METRIC ISO 8434-1-S (DIN 2353) BULKHEAD

CS
Carbon
Steel

TYPE	DN	PN		ØA	C	Ød	ch	ØM	WEIGHT	ITEM CODE		
QC FFAP PLATE 12S BK MALE	10	MPa	42	mm	-	113,2	19,75	30	M20x1,5	kg	0,45	NC43I020000
		Psi	6090	inch	-	4,46	0,78	1,18		lb	0,99	
QC FFAP PLATE 12S BK FEMALE	10	MPa	42	mm	25	96,7	-	30	M20x1,5	kg	0,48	NC44I020000
		Psi	6090	inch	0,98	3,81	-	1,18		lb	1,06	
QC FFAP PLATE 16S BK MALE	12,5	MPa	42	mm	-	120	24,5	34	M24x1,5	kg	0,62	NC43I030000
		Psi	6090	inch	-	4,72	0,96	1,34		lb	1,37	
QC FFAP PLATE 16S BK FEMALE	12,5	MPa	42	mm	32	98	-	34	M24x1,5	kg	0,47	NC44I030000
		Psi	6090	inch	1,26	3,86	-	1,34		lb	1,04	
QC FFAP PLATE 20S BK MALE	19	MPa	35	mm	-	153,3	29,95	34	M30x2	kg	0,88	NC43I040000
		Psi	5075	inch	-	6,04	1,18	1,34		lb	1,94	
QC FFAP PLATE 25S BK MALE	19	MPa	35	mm	-	157,3	29,95	41	M36x2	kg	0,94	NC43I040001
		Psi	5075	inch	-	m	1,18	1,61		lb	2,07	
QC FFAP PLATE 25S BK MALE	25	MPa	35	mm	-	171,2	36	50	M36x2	kg	1,49	NC43I020000
		Psi	5075	inch	-	6,74	1,42	1,97		lb	3,28	



■ QUICK COUPLINGS FLAT FACE CONNECTION UNDER PRESSURE (FFAP PLATE MOUNTING) (male/female) MALE THREAD METRIC ISO 8434-1-2 (SAE J514) JIC

											CS Carbon Steel		
TYPE	DN	PN		ØA	C	Ød	ch	ØM	WEIGHT	ITEM CODE			
QC FFAP PLATE 3/8 JIC MALE	10	MPa	42	mm	-	100,3	19,75	30	9/16-18 UNF	kg	0,415	NC43J020000	
		Psi	6090	inch	-	3,95	0,78	1,18		lb	0,91		
QC FFAP PLATE 3/8 JIC FEMALE		MPa	42	mm	25	83,8	-	30	9/16-18 UNF	kg	0,44	NC44J020000	
		Psi	6090	inch	0,98	3,30	-	1,18		lb	0,97		
QC FFAP PLATE 1/2 JIC MALE		MPa	42	mm	-	103	19,75	30	3/4-16 UNF	kg	0,43	NC43J020001	
		Psi	6090	inch	-	4,06	0,78	1,18		lb	0,95		
QC FFAP PLATE 1/2 JIC FEMALE		MPa	42	mm	25	86,4	-	30	3/4-16 UNF	kg	0,45	NC44J020001	
		Psi	6090	inch	0,98	3,40	-	1,18		lb	0,99		
QC FFAP PLATE 5/8 JIC MALE		MPa	42	mm	-	105,5	19,75	30	7/8-14 UNF	kg	0,45	NC43J020002	
		Psi	6090	inch	-	4,15	0,78	1,18		lb	0,99		
QC FFAP PLATE 5/8 JIC FEMALE		MPa	42	mm	25	89	-	30	7/8-14 UNF	kg	0,48	NC44J020002	
		Psi	6090	inch	0,98	3,50	-	1,18		lb	1,06		
QC FFAP PLATE 1/2 JIC MALE		12,5	MPa	42	mm	-	104,7	24,5	34	3/4-16 UNF	kg	0,56	NC43J030000
			Psi	6090	inch	-	4,12	0,96	1,34		lb	1,23	
QC FFAP PLATE 1/2 JIC FEMALE	MPa		42	mm	32	82,7	-	34	3/4-16 UNF	kg	0,41	NC44J030000	
	Psi		6090	inch	1,26	3,26	-	1,34		lb	0,90		
QC FFAP PLATE 5/8 JIC MALE	MPa		42	mm	-	107,3	24,5	34	7/8-14 UNF	kg	0,57	NC43J030001	
	Psi		6090	inch	-	4,22	0,96	1,34		lb	1,26		
QC FFAP PLATE 5/8 JIC FEMALE	MPa		42	mm	32	85,3	-	34	7/8-14 UNF	kg	0,42	NC44J030001	
	Psi		6090	inch	1,26	3,36	-	1,34		lb	0,93		
QC FFAP PLATE 3/4 JIC MALE	MPa		42	mm	-	109,9	24,5	34	1-1/16-12 UN	kg	0,58	NC43J030002	
	Psi		6090	inch	-	4,33	0,96	1,34		lb	1,28		
QC FFAP PLATE 3/4 JIC FEMALE	MPa		42	mm	32	87,9	-	34	1-1/16-12 UN	kg	0,43	NC44J030002	
	Psi		6090	inch	1,26	3,46	-	1,34		lb	0,95		
QC FFAP PLATE 1 JIC MALE	MPa		42	mm	-	111,1	24,5	34	1-5/16-12 UN	kg	0,6	NC43J030003	
	Psi		6090	inch	-	4,37	0,96	1,34		lb	1,32		
QC FFAP PLATE 1 JIC FEMALE	MPa	42	mm	32	89,1	-	34	1-5/16-12 UN	kg	0,45	NC44J030003		
	Psi	6090	inch	1,26	3,51	-	1,34		lb	0,99			