



# PUSH PULL AGRI DV

PUSH PULL AGRI  
WITH DECOMPRESSION VALVE

**This model allows to joint the male couplers  
with remaining pressure and even female**

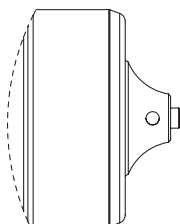
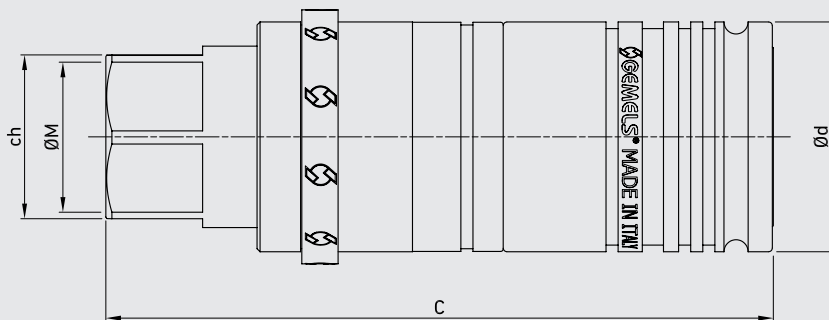
Edition. 21.0

## CS Carbon Steel

- Type: Quick Couplings
- Models: PUSH PULL AGRI DV ISO 7241/A
- Sizes: DN12,5
- Pressure: up to PN250
- Treatment: Galvanized

## SS Stainless Steel

- Type: Quick Couplings
- Models: PUSH PULL AGRI DV ISO 7241/A
- Sizes: DN12,5
- Pressure: up to PN250



Special pin to connect parts under residual pressure.  
The pin could be mounted on both sides, male or female.  
The opposite side has to be a ISO A standard poppet.

During connection the residual pressure  
will release by the smaller holes.



## CODE DESCRIPTION STRUCTURE

QC	1/2	1M/F	DN12,5	1	B
<b>Type of coupling</b>					
PUSH PULL AGRI ISO 7241/A					
<b>Ends</b>					
ISO 1179-1 BSPP	ASME B1.20.1 NPT	ISO 11926-1 (SAE J1926-1) ORB	ISO 8434-6 BSPP MALE		
G 1/2	N 1/2	SAE8	G 1/2M		
FEMALE					
<b>DN/ISO</b>					
12,5					
<b>Body Material</b>					
● 1 = 1,0737					
● 4 = 1,4404					
<b>Seal material</b>					
● B = NBR E = FKM*					
● E = FKM					

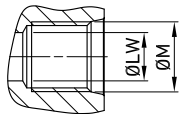
### \*On request

- Other threads on request (DIN)
- Plug
- Cups

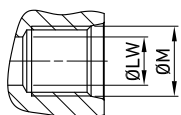


Available colours:

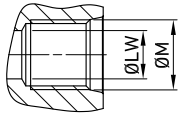
- Blue
- Yellow
- Red
- Green


**QUICK COUPLINGS PUSH PULL AGRI DV ISO 7241/A (female)  
FEMALE THREAD ISO 1179-1 BSPP WITH POPPET**

									CS Carbon Steel										SS Stainless Steel
TYPE	DN	PN	C	Ød	ch	ØM	WEIGHT	ITEM CODE	TYPE	DN	PN	C	Ød	ch	ØM	WEIGHT	ITEM CODE		
QC PP AGRI DV G 1/2 FEMALE	12,5	MPa 25	mm 110,5	38	27	G1/2	kg 0,227	NC25G030000	QC PP AGRI DV G 1/2 FEMALE	12,5	MPa 25	mm 110,5	38	27	G1/2	kg 0,227	NC25G03S000		
		Psi 3625	inch 4,35	1,50	1,06		lb 0,50				Psi 3625	inch 4,35	1,50	1,06		lb 0,50			

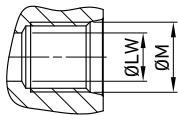

**QUICK COUPLINGS PUSH PULL AGRI DV ISO 7241/A (female)  
FEMALE THREAD ASME B1.20.1 NPT WITH POPPET**

									CS Carbon Steel										SS Stainless Steel
TYPE	DN	PN	C	Ød	ch	ØM	WEIGHT	ITEM CODE	TYPE	DN	PN	C	Ød	ch	ØM	WEIGHT	ITEM CODE		
QC PP AGRI DV N 1/2 FEMALE	12,5	MPa 25	mm 110,5	38	27	N1/2	kg 0,227	NC25N030000	QC PP AGRI DV N 1/2 FEMALE	12,5	MPa 25	mm 110,5	38	27	N1/2	kg 0,227	NC25N03S000		
		Psi 3625	inch 4,35	1,50	1,06		lb 0,50				Psi 3625	inch 4,35	1,50	1,06		lb 0,50			



### QUICK COUPLINGS PUSH PULL AGRI DV ISO 7241/A (female) FEMALE THREAD ISO 11926-1 (SAE J1926-1) ORB WITH POPPET

								CS Carbon Steel									SS Stainless Steel
TYPE	DN	PN	C	Ød	ch	ØM	WEIGHT	ITEM CODE	TYPE	DN	PN	C	Ød	ch	ØM	WEIGHT	ITEM CODE
QC PP AGRI DV SAE8 FEMALE	12,5	MPa 25	mm 110,5	38	27	SAE8	kg 0,227	NC25S030000	QC PP AGRI DV SAE8 FEMALE	12,5	MPa 25	mm 110,5	38	27	SAE8	kg 0,227	NC25S03S000
		Psi 3625	inch 4,35	1,50	1,06		lb 0,50										



### QUICK COUPLINGS PUSH PULL AGRI DV ISO 7241/A (female) MALE THREAD ISO 8434-6 BSPP WITH POPPET

								CS Carbon Steel									SS Stainless Steel
TYPE	DN	PN	C	Ød	ch	ØM	WEIGHT	ITEM CODE	TYPE	DN	PN	C	Ød	ch	ØM	WEIGHT	ITEM CODE
QC PP AGRI DV G 1/2M FEMALE	12,5	MPa 25	mm 110,5	38	27	G1/2M	kg 0,227	NC25E030000	QC PP AGRI DV G 1/2M FEMALE	12,5	MPa 25	mm 110,5	38	27	G1/2M	kg 0,227	NC25E03S000
		Psi 3625	inch 4,35	1,50	1,06		lb 0,50									Psi 3625	